

# Community Environmental Management

Alana Hartman

West Virginia Dept. of Environmental Protection

December 9, 2014

[Alana.c.hartman@wv.gov](mailto:Alana.c.hartman@wv.gov) (304)822-7266



# C.E.M. Mission Statement

To benefit community members by educating them on ways they may prolong the life of their community's infrastructure (roads, stormwater ponds, culverts), add natural beauty to their property, help their local environment, and strengthen community bonds.



# Basic C.E.M. steps

- Solicit applications from HOAs, etc.
- Review program with HOA contact person
- Offer “Stormwater 101” workshop for the HOA members, explain that we have technical support and might be able to supply or help them find appropriate funding for projects
- Help them to coordinate an initial project
- Keep in touch and continue to offer support



One contact person per community  
(small grant, strong partnership)

- Chapel View: WV DEP's Stormwater Specialist
- Greenwood Cemetery: Region 9 Planning & Dev. Council's Chesapeake Bay Coordinator
- Old Mill Crossing: Cacapon Institute Executive Director
- Patrick Henry Estates: Cacapon Institute's Urban Forestry Coordinator



STRATEGIES: CEM – Engaging all the Trib Team technical resources to drive change in residential landscape management and planning.

# Community Environmental Management (CEM)

Partnership of the WV  
Chesapeake Bay  
Tributary Team



# CEM Focuses on Mitigating NPS stormwater runoff pollution

- **Green infrastructure**
  - tree plantings
  - rain gardens
  - rain barrels
  - bio-swales



STRATEGIES: CEM. Again top-down and bottom-up recruitment. WV's new subdivisions suffer from the same problems as those in more developed communities to the east.

# E.g., Offered to Old Mill Crossing and Chapel View 2013:

- A dozen trees for their common area (provided by PWP) and/or a discount on trees to go into people's yards.
- The Chapel View folks paid \$5 toward trees that ended up costing about \$8 after delivery. The final details on costs and number of trees will depend on the market – don't get boxed in on details.
- Offer “flowering trees” to anyone. If home owners want larger trees, could make a site visit to check for utilities & appropriate spacing.



# C.E.M. benefits

- NGOs and agencies can work with a new group of people, new sites
- The community applied, so they must be interested in solving a problem or helping the environment
- Organizes the overlapping strengths of partners

















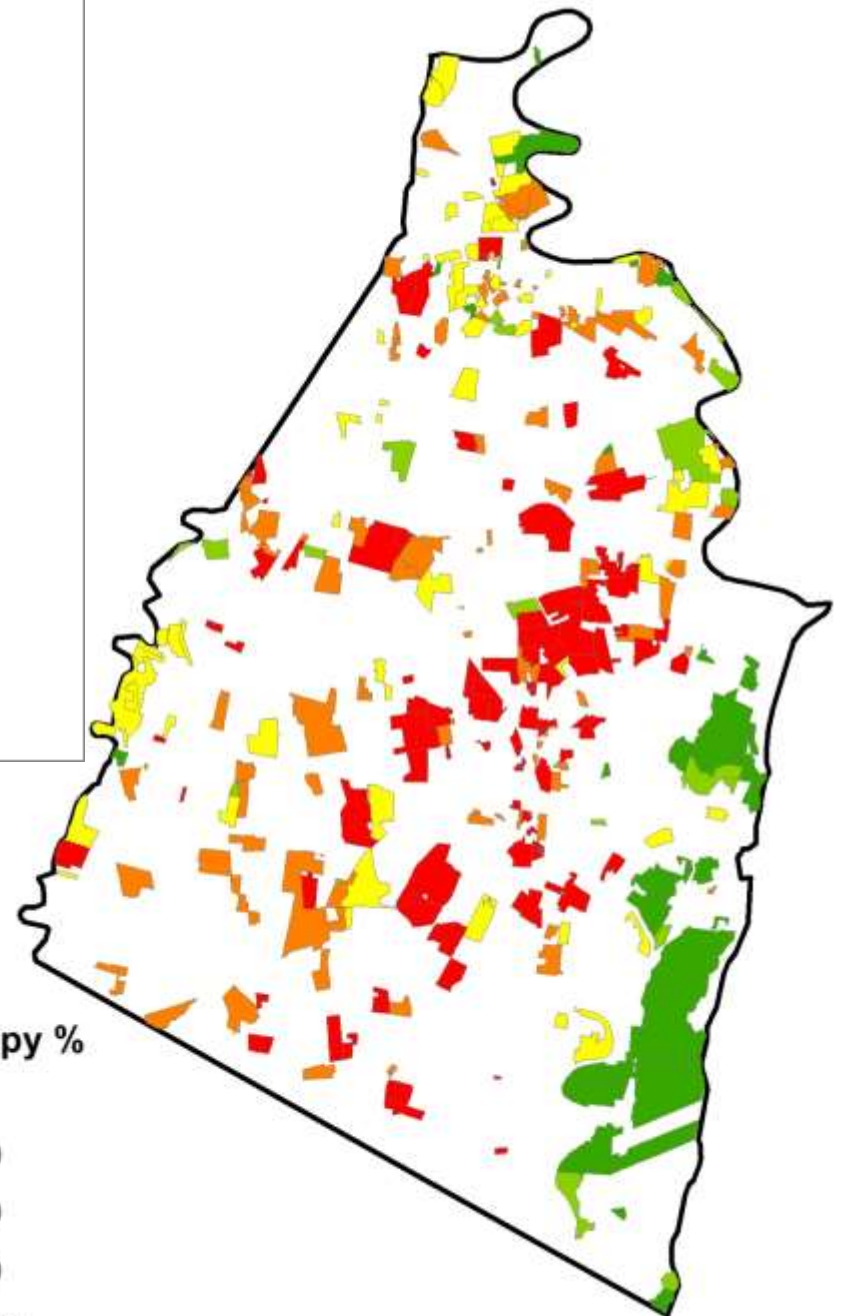
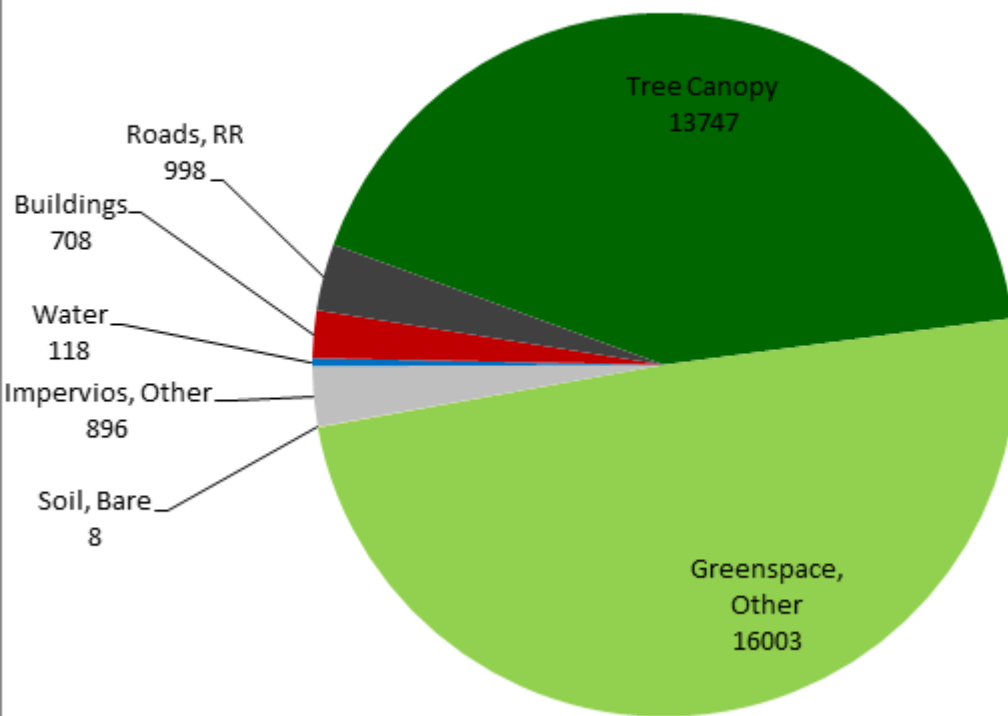








# Jefferson County Subdivision Landcover (acres)



## Tree Canopy %

